



Doggett Concrete Construction has established itself as a leading concrete contractor in the Carolinas for over sixty years. Our enduring success is rooted in our unwavering commitment to customer satisfaction and job site safety. We achieve these goals by leveraging cutting-edge technology, a highly skilled workforce, and the expertise of a full-time safety director.

In an industry that constantly evolves, we remain dedicated to researching innovative and more efficient methods to boost productivity. This dedication has enabled us to consistently outperform competitors in our market. However, our ultimate objective extends beyond mere customer acquisition; we aim to establish, cultivate, and sustain long-term relationships with our clients.

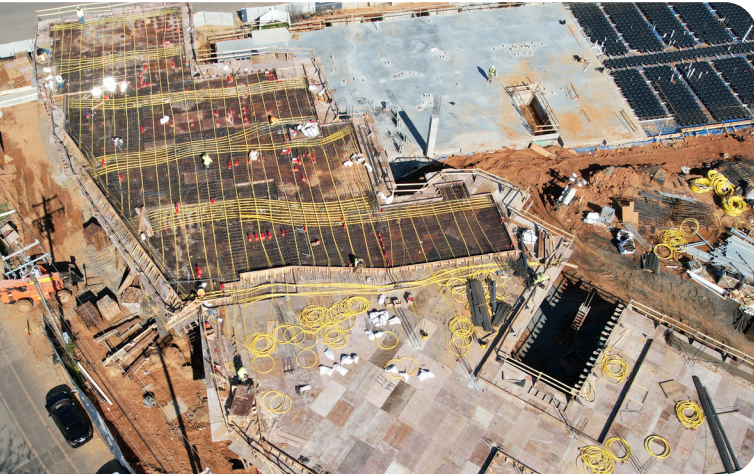
## OUR SERVICES

- FOUNDATIONS
- POST TENSION SLABS ON GRADE
- CONVENTIONAL SLABS ON GRADE
- ELEVATED DECKS
- SLAB ON METAL DECK
- FOUNDATION WALLS
- RETAINING WALLS
- PARKING GARAGE FOUNDATIONS
- PARKING GARAGE SLABS
- WATER & WASTEWATER FACILITIES

**SAFETY AT DOGGETT IS JUST A CLICK AWAY**



# PROJECT HIGHLIGHTS



## THE QUARTER MULTIFAMILY - CHARLOTTE

CLANCY & THEYS

- Cupolex vapor mitigation
- Retaining walls
- Elevated deck



## TREMONT II - CHARLOTTE

FORTUNE-JOHNSON

- Elevated deck
- Split-level, post-tension slab on grade



## NEXTON II - CHARLESTON

CF EVANS

- Post-tension slab on grade
- Cast in place walls



## THE AVERY - ASHEVILLE

C. HERMAN CONSTRUCTION

- Elevated deck
- Post-tension slab on grade

## RIVERCHASE VISTA - SAVANNAH

FLOURNOY

- Post-tension slab on grade



# PROJECT HIGHLIGHTS



## VINTAGE DURHAM - DURHAM

TDK

- Elevated deck
- Walls
- Post-tension slab on grade



## CARPENTER FIRE STATION - CARY

Wood Partners

- Post-tension slab on grade
- Stem walls



## NOVEL MALLARD CREEK - CHARLOTTE

CRESCENT COMMUNITIES

- Post-tension slab on grade
- Split level walls



## HAVEN AT PALMER POINT - COLUMBIA

MB KAHN

- Senior living
- Post-tension slab on grade

## DOGGETT COMPANIES

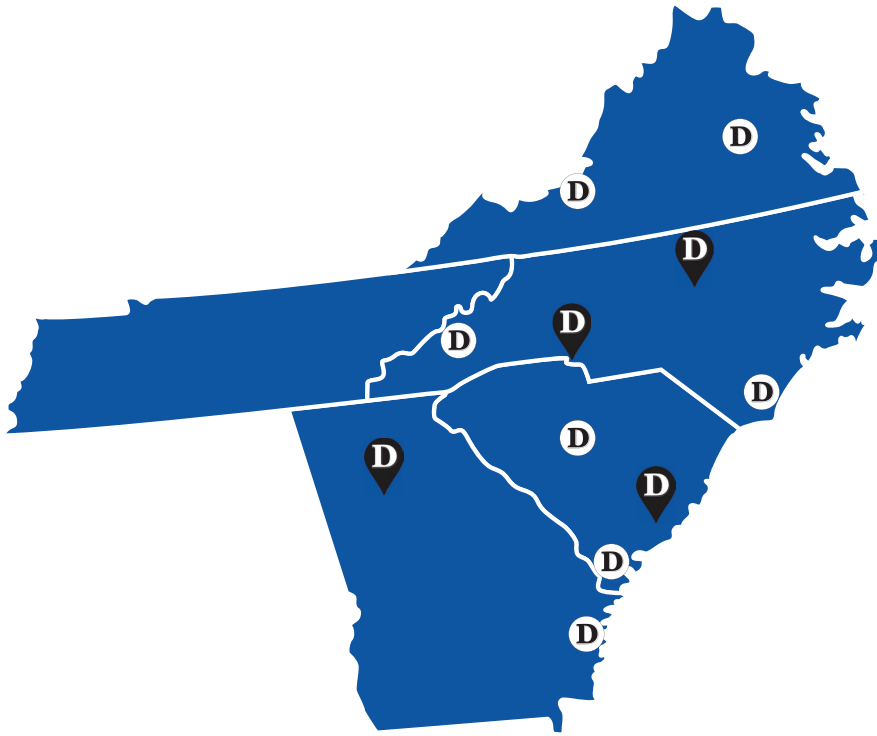
**Doggett**  
CONCRETE CONSTRUCTION

**STONE SHOOTERS**  
OF THE CAROLINAS

moisture  loc

**Doggett**  
RESIDENTIAL & LIGHT COMMERCIAL

# ABOUT DOGGETT



## BUSINESS DEVELOPMENT MANAGERS

### Randy Brown

Charlotte  
rbrown@doggettconcrete.com  
704-995-5942

### Jason Phillips

Raleigh  
jphillips@doggettconcrete.com  
919-628-6984

## SAFETY DIRECTOR

### David Clewley

dclewley@doggettconcrete.com  
704-621-5839

Our motto, "You Matter - We Care" couldn't be more relevant in today's world on looking out for our most valuable resource - people.

**At Doggett, safety is more than a word - it's a belief.** We believe in looking out for our people and their families. We believe our best practices are designed to prevent vs. react. We believe our Core Values and Behavioral Based Safety (BBS) practices are to dovetail with each other.

In 2023 we overhauled our entire safety program centering on real-time & innovation technology for all management & leadership personnel by omitting paper to iPads, via the SiteDocs app. Our Environmental, Health, and Safety manual moved more to relevant illustrations, diagrams & charts.

We believe having homegrown training and hands-on coaching banks better results versus relying on outsourced material. We're able to do this by having two Outreach Training Instructors.

Our Pre-task planning is team-oriented for the whole crew to assess their work area, participate, understand & agree. We instill the BBS bottom-up approach where the newest crew member's voice matters.

## EMR RATING

# .84

